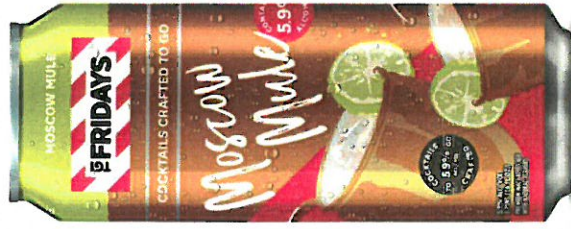
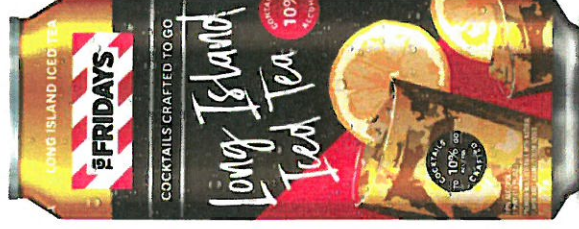


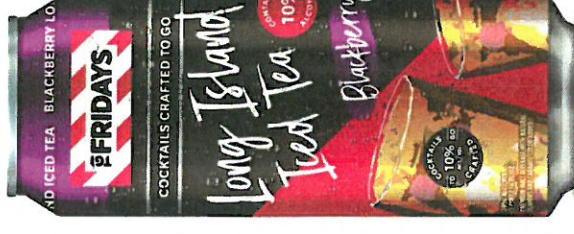
TGI FRIDAYS COCKTAILS



Appearance, slight natural cloud from ginger and lime, nose is craft made ginger beer with ginger ale sweetness. Up-front taste is ginger beer and juicy lime. In the background mint is very subtle but in the far background. Finish is a low to medium ginger warmth with a great balance of sweetness and acidity cleaning out without being cloying.



Appearance is cola/tea, nose is clean vanilla with cola note, up-front taste is cola first followed by tea, mid-palette had fresh lemon supporting long island iced tea flavor, boozy note acidity and sweetness all in balance, finish is boozy with a slight lemon/tea acidity.



Appearance is cola/tea, nose is blackberry soda with blackberry juice, up-front taste is craft blackberry juice/soda with tea and lemon background, finish is juicy blackberry with tea. This flavor walks the line between craft juicy soda and regular soda with a tea background.